



KEY RESPONSIBILITIES

ASSESSMENT OF CARE

PLANNING OF CARE





DELIVERY OF CARE







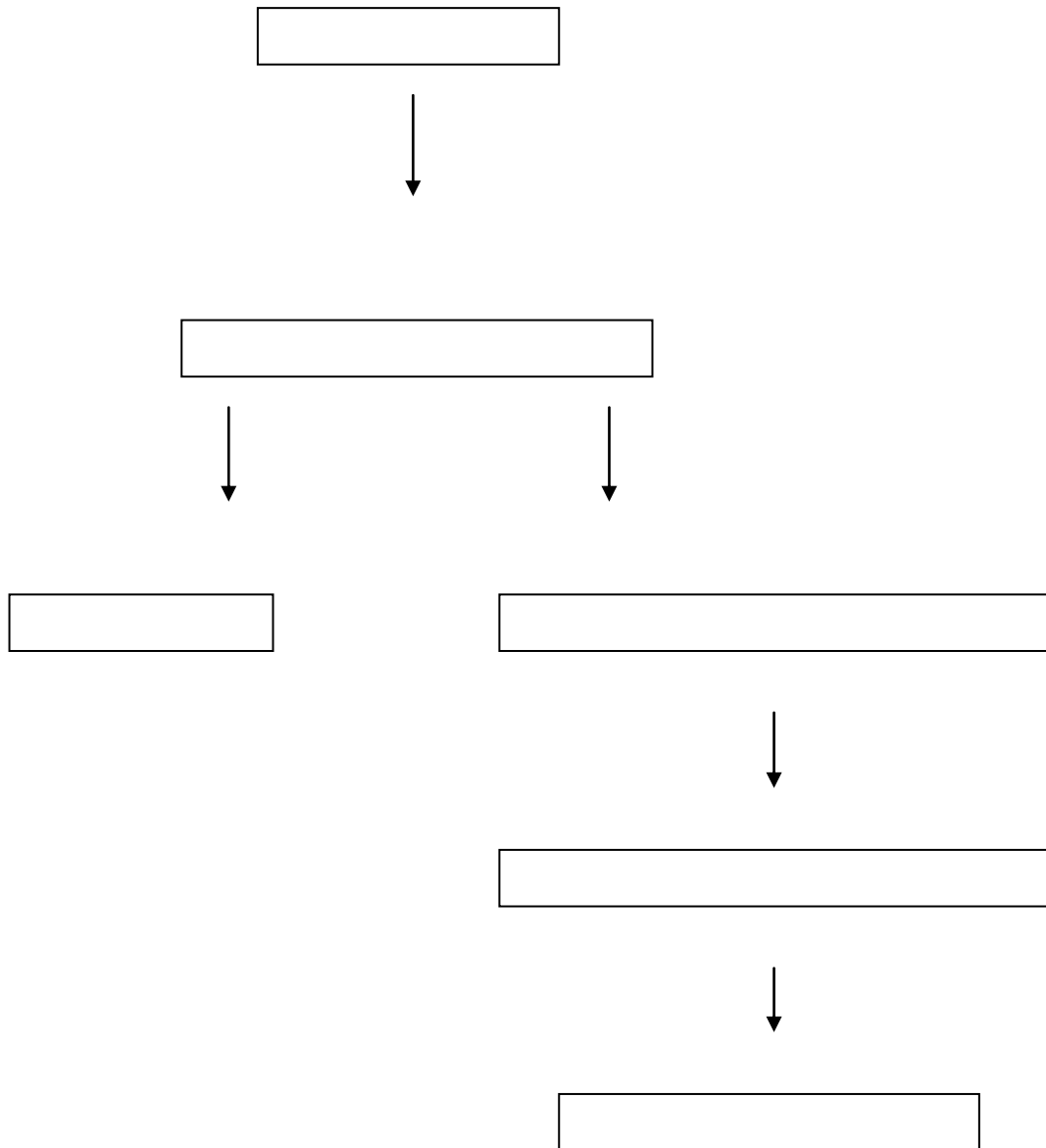
The Trust may ask you to undertake other duties, as required, which are not necessarily specified in the job description but which are commensurate with the grade of the post.

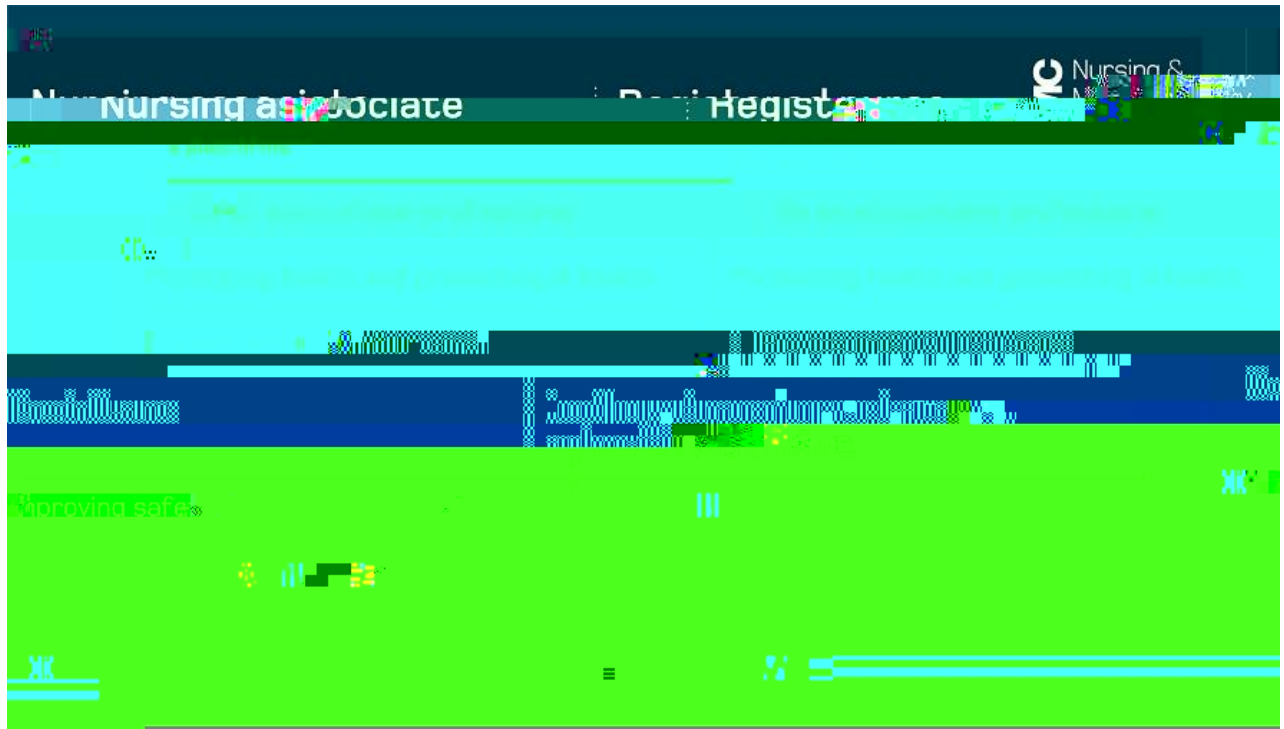
The job description itself may be amended from time to time in consultation with the post holder, within the scope and general level of responsibility attached to the post.

All post holders must take responsibility to ensure that they are aware of and adhere to all Trust policies, procedures and guidelines relating to their employment regardless of their position within the Trust.

Appendix A of this Job Description and Person specification details key information you should be aware of.

### ORGANISATION CHART





## Person Specification







|                   |                              |
|-------------------|------------------------------|
| <b>Job Title:</b> | Apprentice Nursing Associate |
| <b>Base:</b>      | All Wards and Departments    |

The following criteria will be assessed from information provided on your completed application form, during the shortlisting and assessment process, and by your referees.

| Criteria | Essential | Desirable |
|----------|-----------|-----------|
|          |           |           |







## **Data Quality**

The Trust recognises the role of reliable information in the delivery and development of its service and

